

BROTTON HALL & THE COURTYARD



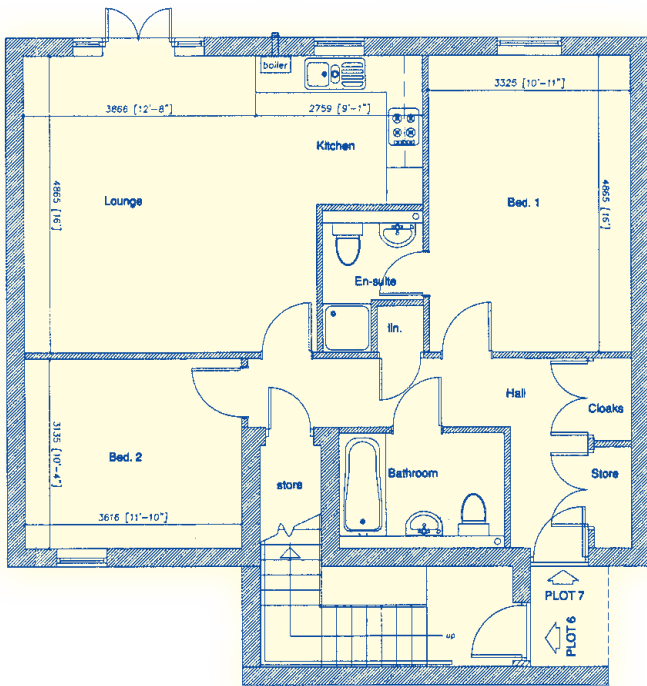
Development of 2 & 3 bedroom houses and 1 & 2 bedroom apartments
For more information tel: 01287 201286

Plots 6 & 7 and 12 & 13

A newly built stylish 2 bedroomed apartment located in the courtyard to the rear of Brotton Hall. The apartments have a designated parking space along with gas central heating while the master bedroom comes with an en suite bathroom.

The kitchen comes complete with an integrated oven & hob whilst the purchaser has a choice of unit styles & tiles. The apartment also comes with the NHBC 10 year buildmark warranty.

Floor plans and dimensions

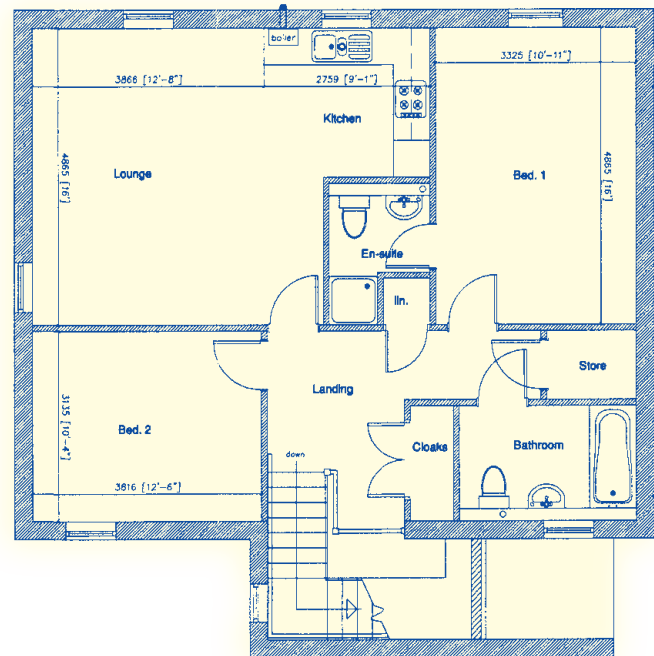


< Ground Floor Flat

- Living Room
4.82m x 4.81m
- Kitchen
2.39m x 1.78m
- Bedroom 1
4.82m x 3.28m
- Bedroom 2
3.57m x 3.09m

First Floor Flat >

- Living Room
4.86m x 4.85m
- Kitchen
2.43m x 1.75m
- Bedroom 1
4.86m x 3.32m
- Bedroom 2
3.81m x 3.13m



* Floor plans only show approximate dimensions for a typical Westgate Home of its type. Within NHBC guidelines, the dimensions for a specific house may vary as each house is built individually.

